

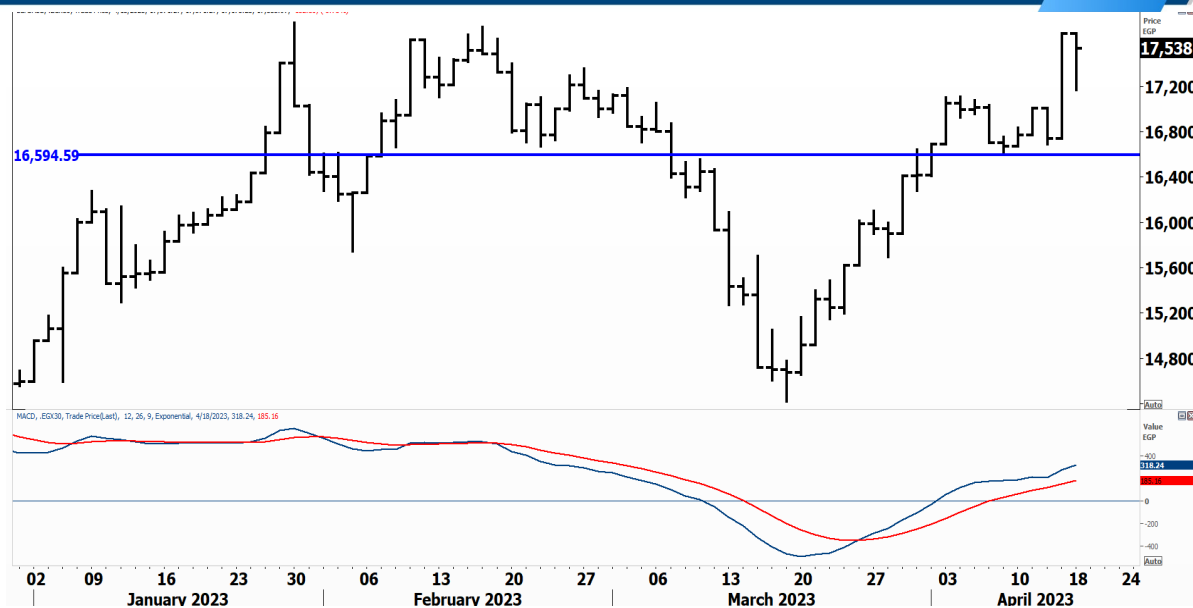


PIONEERSECURITIES

# TECH TO THE POINT

19-Apr- 2023

This report must be read with the disclaimer  
on the last page



Price EGP	
17,538	Last 17,538.97
17,200	High Today 17,684.10
16,800	Low Today 17,175.23
16,400	Volume M
16,000	First Support 17,100
15,600	Second Support 16,600
15,200	First Resistance 17,700
14,800	Second Resistance 18,400
	Stop Loss
HISTORICAL RETURN %	
1 WEEK	2.06%
1 MONTH	0.57%
1 QUARTER	29.14%
1 YEAR	51.86%
YTD	17.29%

## Analysis

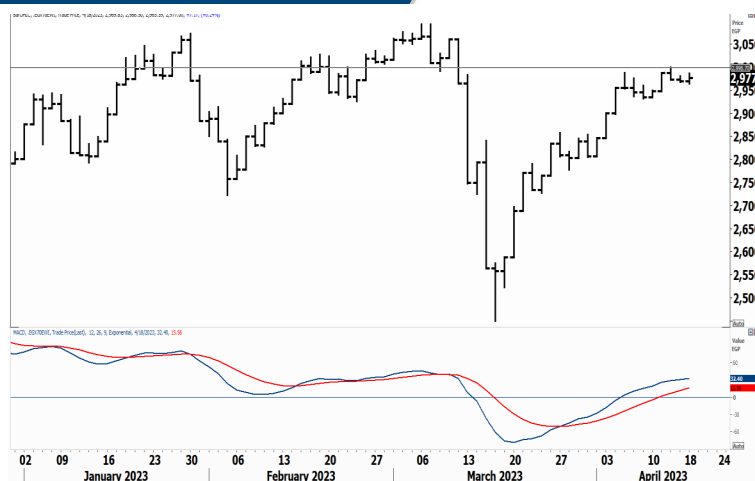
It is clear now that our new stop will be set below 16,600. This is now an important level and if it is violated, a clear sell signal will be triggered.

On the other hand, the index is currently challenging its major peak and trying to break it upwards; selling pressure is expected to appear at these levels which can bring the market near 17,000. A break, however, above 17,700-17,800 will lead to a continuation of the major uptrend.


## EGX Small Caps Index/ EGX 70


## Analysis


Still hovering around its 3,000 resistance level. As we mentioned before, a break above this level will trigger a new entry signal and our target will be set around 3,100, which is our major peak that should be watched.




### Resistance

**ABUK**  The breakout above 48 is significant and should lead to more rise in the future. Stops should be placed below 44.

**EGAL**  One of the outperforming stocks in the market and is expected to reach its target that lies at 50. The breakout above 40 is a confirmation of EGAL's strength.

**ALCN**  Closed at 23.25 after breaking resistance. It is worth mentioning that ALCN, after the major breakout above 20, is on its way to new historical highs.

**EGCH**  Broke 7.3 to the upside and closed clearly above it. Our minimum target lies at 8.


### Support


No stocks broke their support yesterday


## Testing

### Support

### Resistance

**SKPC**  Broke above 21.75 as it was expected and is currently challenging its major peak that lies at 22.75. A breakout above this level is expected and a stronger rise will probably take place.

**HRHO**  A breakout above 18 will trigger an entry signal with a target at 20. Such a breakout will create a nice trading opportunity.

**ORAS**  Resistance lies at 102. A break above this level will be considered bullish for the stock and will lead it to 120 initially.

Symbol	S. Description	Last	Buying Area 1	Buying Area 2	Selling Area 1	Selling Area 2	Selling Area 3	Stop Loss
--------	----------------	------	---------------	---------------	----------------	----------------	----------------	-----------

*N.B. please note that the levels are too close as these trading opportunities only suit T+0 speculators*

*The prices that are accompanied by a green arrow in the above table show resistance levels. Thus, a break above these levels will pave the way to achieve one (or all) of the targets.*

*The area between buying area 1 and buying area 2 is a trading area.*

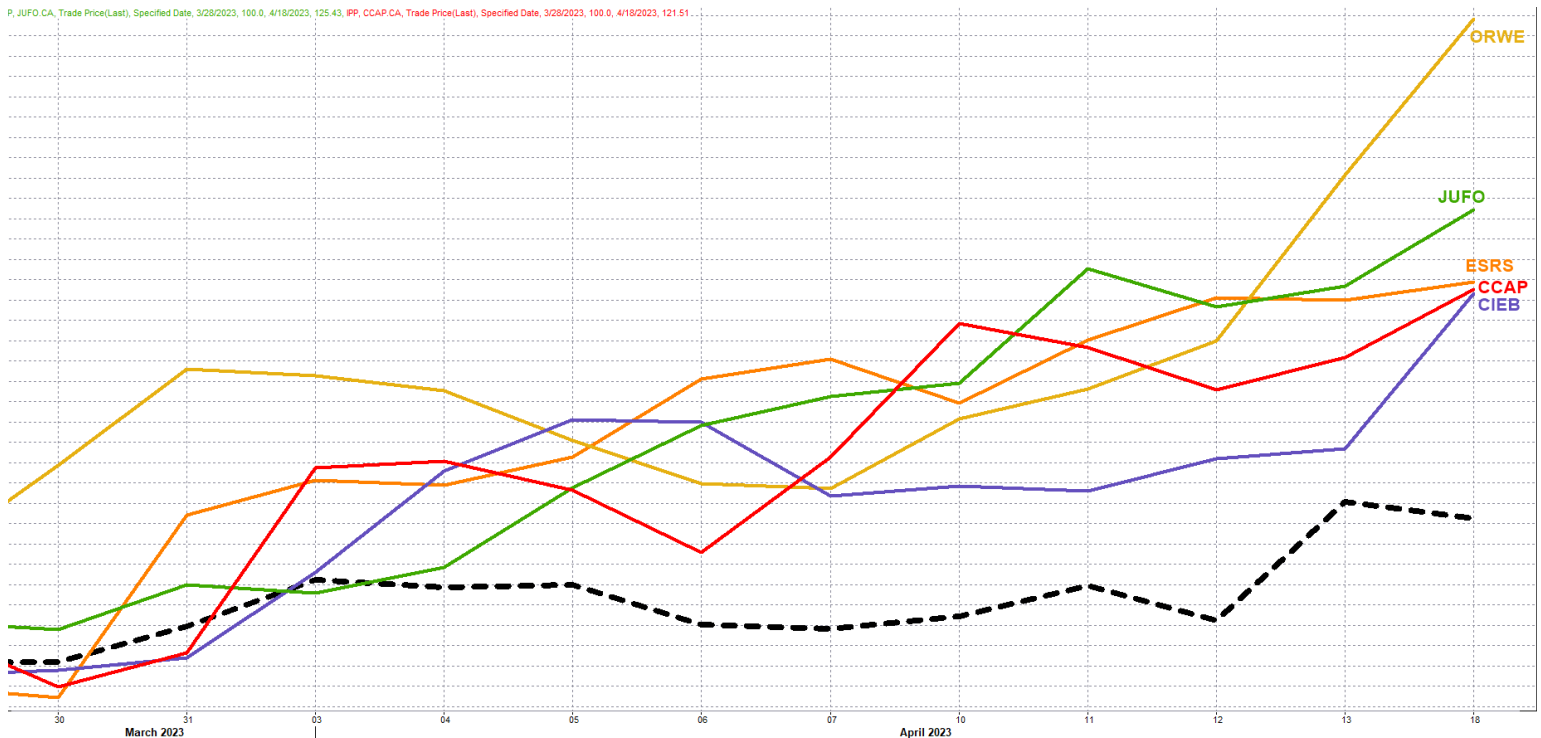
#### Yesterday's T+0/T+1 Trades



Symbol	Hit first Target	Hit Second Target	Hit Third Target	Hit Stop Loss	Triggered Buy	No Action

#### Top 5 Performers

#### EGX 30 Stocks; Past 2 Weeks



Symbol	S. Description	Last	Support 1	Support 2	Resistance 1	Resistance 2	Trend	Recommendation	Stop Loss/ Re-Entry
COMI.CA	COM INTL BK/d	54.6	53.4	51	59	63.5	↔	Hold	59
EFIH.CA	E-FINANCE FOR DIGITAL&FINANCIAL INVESTMENT	18.25	17	16.6	18.9	19.9	↔	Hold	16.6
EAST.CA	EASTERN CO/d	17	16.12	15	18	18.9	↔	Hold	15
EKHO.CA	EGYPT KUWAIT H/d	1.152	\$1.11	\$1.08	\$1.156	\$1.182	↔	Hold	1.08
ABUK.CA	ABU QIR FERTILIZERS /d	48.72	46	43.66	51	54	↔	Hold	43.66
HRHO.CA	EFG HERMES HOL/d	17.6	16.7	16.25	18.1	18.9	↔	Hold	16.25
FWRY.CA	FAWRY FOR BANKING TECHNOLOGY /d	5.6	5.47	5.15	5.85	6.15	↔	Hold	5.15
MFPC.CA	MISR FERTILIZERS PRODUCTION CO	175.93	165	157.7	175*	185	↑	Hold	157.7
TMGH.CA	TALAT MOSTAFA/d	8.96	8.6	8.2	9.1	9.5	↔	Hold	8.2
EKHOA.CA	EGYPT KUWAIT HOLDING CO	43.99	40.5	39	43.5*	47	↑	Hold	39
SWDY.CA	ELSWEDY ELECTR/d	17.48	16.4	15.6	17.8	18.9	↑	Hold	15.6
ETEL.CA	TELECOM EGYPT/d	24.82	23.4	22.5	24.7*	27.5	↔	Hold	22.5
CIRA.CA	CAIRO FOR INVESTMENT AND REAL ESTATE	10.14	10.02	9.65	11.2	12	↓	P.Sell	12
MNHD.CA	NASR CITY HOUSE/d	3.53	3.37	3.17	3.54	3.67	↔	Hold	3.17
AMOC.CA	ALEXANDRIA MINERAL OILS CO/d	9.99	9.16	8.6	10	10.5	↑	Hold	8.6
CIEB.CA	CREDIT AGRICOL/d	10.02	9.6	9	10.5	11.08	↔	Hold	9
EFID.CA	EDITA FOOD INDUSTRIES	15.03	14.5	13.5	15.23	16	↔	Hold	13.5
CLHO.CA	CLEOPATRA HOSPITAL	4.44	4.35	4.2	4.7	4.95	↔	Hold	4.2
SKPC.CA	SIDI KERIR PET/d	22.17	20.3	19	22.5	23	↑	Hold	19
ESRS.CA	EZZ STEEL/d	41.85	38.5	35.5	41.7*	44	↑	Hold	35.5
JUFO.CA	JUHAYNA FOOD INDUSTRIES	13.12	11.8	11.3	13*	13.85	↑	Hold	11.3
HELI.CA	HELIOPOLIS/d	10.28	9.77	9	10.8	11.6	↔	Hold	9
TALM.CA	TAALEEM MANAGEMENT SERVICES	3.1	3.2*	2.87	3.3	3.5	↓	P.Sell	3.5
ADIB.CA	ABU DHABI ISLAMIC BANK EGYPT	21.39	20.3	18.75	22.3	23	↑	Hold	18.75
ORAS.CA	ORASCOM CONSTRUCTION	100	95	90	108	114	↔	Hold	90
CCAP.CA	CITADEL CAPITA/d	2.22	2.09	1.96	2.33	2.47	↔	Hold	1.96
RMDA.CA	TENTH OF RAMADAN FOR PHARMACEUTICAL	2.18	2.1	1.985	2.32	2.43	↔	Hold	1.985
PHDC.CA	PALM HILL DEV /d	2.04	1.9	1.83	2.06	2.14	↔	Hold	1.83
ORWE.CA	ORIENTAL WEAVERS /d	16.53	15.25	14.2	16.98	17.7	↑	Hold	14.2
ISPH.CA	IBNSINA PHARMA/d	1.43	1.41	1.31	1.55	1.66	↔	Hold	1.3
AUTO.CA	AUTO GHABBOUR /d	5.35	5.15	4.95	5.54	5.66	↔	Hold	4.95

### Guidelines



**Bullish**



**Bearish**



**Neutral**

Trend: (Upgrade, Downgrade): Change in trend color refers to upgrade or downgrade in the trend relative to the previous trend direction. E.g. change from "↓ Down" to "↔ Flat" is considered an upgrade and vice versa.

**Buy:** Buy the full position.

**P.Buy:** Buy portion of a position

**Hold:** Don't Buy or sell.

**P.SELL:** Sell portion of a position.

**Sell:** Sell the full position.

**Stop Loss:** Completely exit the position (or) Re-entry in cases of Selling.

## Disclaimer

This report has been prepared according to the general data available for public, in accordance with the professional standards applied in that career to the best knowledge of the reporter. The recommendations mentioned are a guiding tool representing a professional opinion, and not granting any profits, consequently it is not obligatory for our valued customers and investors. Pioneers Securities©, Egypt shall not be liable for any direct, indirect, incidental, or consequential damages, including limitation losses, lost revenues, or lost profits that may result from these materials. Republishing this report or any of its contents is subject to prior approval; referring to the source is a must. Opinions expressed are subject to change without notice and may differ or be contrary to the opinions or recommendations of Pioneers Securities©, Egypt Research or the opinions expressed by other business areas or groups of Pioneers Securities©, Egypt as a result of depending solely on the historical technical behavior (price and volume).

## Technical Analysis Department

### **Saleh Nasser**

Chief Technical Strategist

### **Ahmed Hassan**

Senior Technical Analyst

### **Dina Fahmy**

Senior Technical Analyst

### **Tips on reading the report**

The first page includes an analysis of two major indices in the Egyptian Stock Market; the norm is that we will analyze both the EGX 30 and 70, but sometimes we will compare the EGX 30 to its 50 counterpart if there is important information in this comparison. We also use the Hermes Last Index interchangeably with the EGX 30. The .HRMSL index has an important edge; it uses last prices instead of VWAP. First thing our clients should do is to read the indices analysis carefully to have a clear understanding on our overall view.

The second page includes stocks that broke out beyond their resistance levels, and those that violated their support levels. It also includes stocks that are testing their support levels and those that are testing their resistance. This analysis is important and it is the core of our recommendations. It is important to note though that not all stocks that are testing their support levels are bullish, and not all that are testing their resistance levels are bearish. To make it easier for our clients, we have placed a bull face 🐂 if we consider the stock under study bullish, and a bear face 🐻 if we consider it bearish. We also added a big bullet 🟩 if we are neutral.

It is important to note that you might find a stock that we consider bullish in our analysis (in the breakouts/testing section) but it remains as a hold or partial sell in the table. The conflict here is that the table is more conservative. This will not be an issue with our clients, because our analysis will explain why we are being bullish/bearish on the stock.